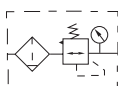


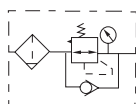


## Symbol

No reflux valve is attached



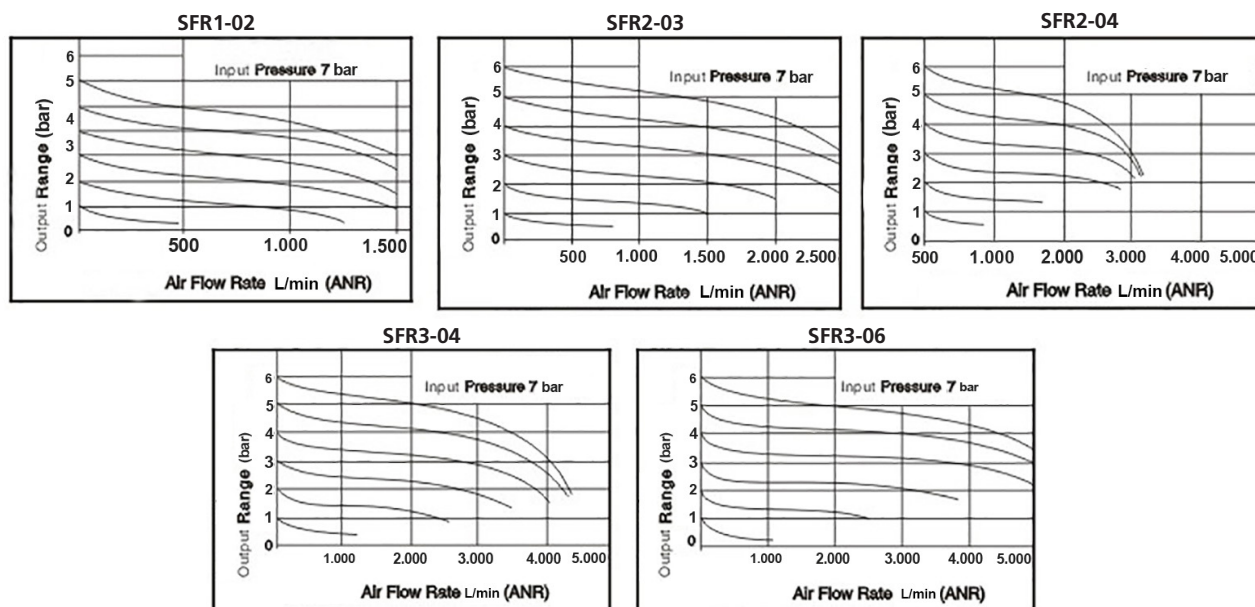
Reflux valve is attached



## Product feature

1. Embedded square pressure gauge is used to save installation space. (External circular pressure gauge is also optional).
2. The pressed-in self-locking mechanism can prevent the abnormal movement of the set pressure caused by external interfering;
3. Balanced design is adopted for the pressure adjustment mechanism.
4. Unique diversion structure makes air flowing through properly rotate, which can more effectively separate the liquid from gas reliably filter the solid grain;
5. The filtering grade includes  $5\ \mu\text{m}$ ;
6. Two drain types are available: manual drain and automatic drain.

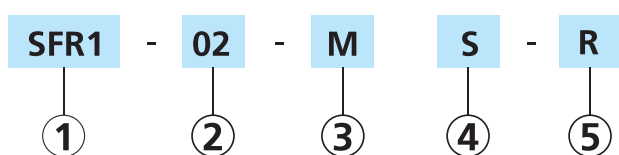
## Pressure and feature of flow



## Specification

Model	SFR1-02	SFR2-03	SFR2-04	SFR3-04	SFR3-06
Fluid	Air				
Port size	1/4"	3/8"	1/2"	1/2"	3/4"
Filtering grade	5 µm				
Pressure range	Automatic drain: 1.5 ~ 9 bar(20~130Psi)				
	Manual drain: 0.5 ~ 9 bar(7~130Psi)				
Proof pressure	15 bar(215 Psi)				
Temperature range	-20~70°C				
Capacity of drain bowl	12 ml	45 ml		80 ml	

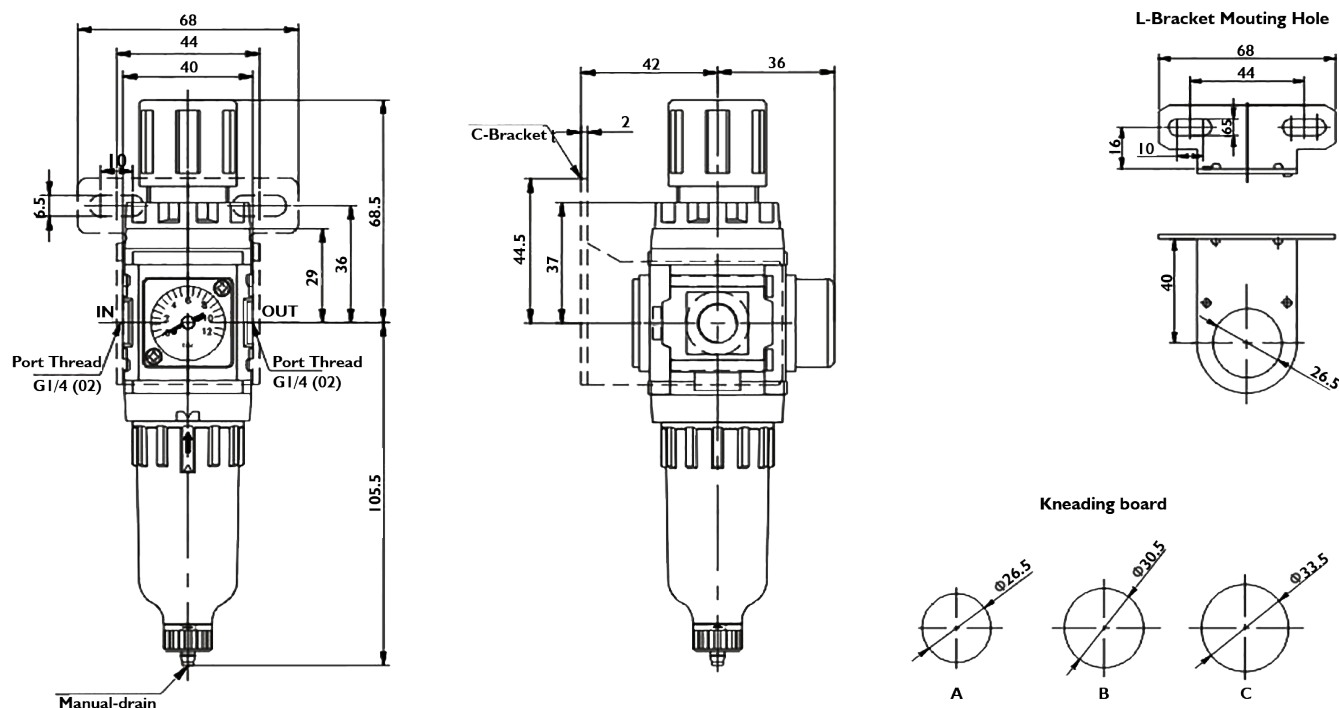
## Ordering code



① <b>Model</b>	-	② <b>Port Size</b>	-	③ <b>Drain type</b>	-	④ <b>Pressure gauge</b>	-	⑤ <b>Reflux valve</b>
SFR1: FR unit		02: 1/4"		M: Manual		Blank: No gauge		Blank: No reflux
SFR2: FR unit		03: 3/8"		A: Automatic		S: Square		R: Reflux valve
		04: 1/2"				C: Circular		
SFR3: FR unit		04: 1/2"				D: Digital		
		06: 3/4"						

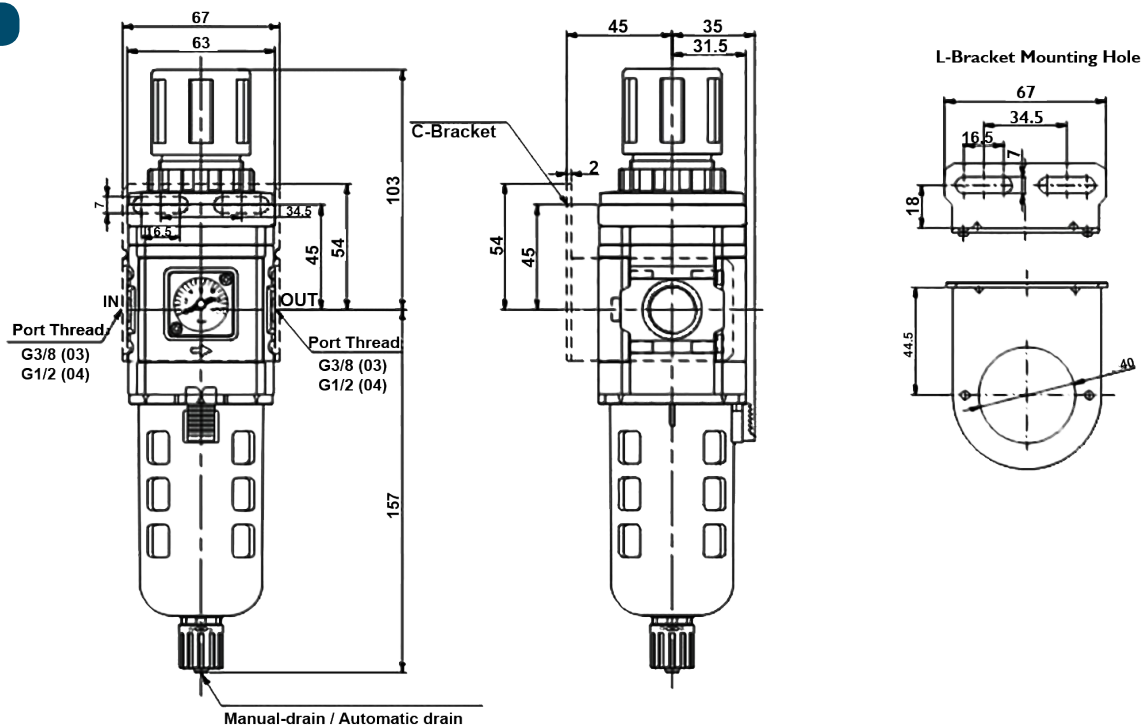
## Dimensions

### SFR1



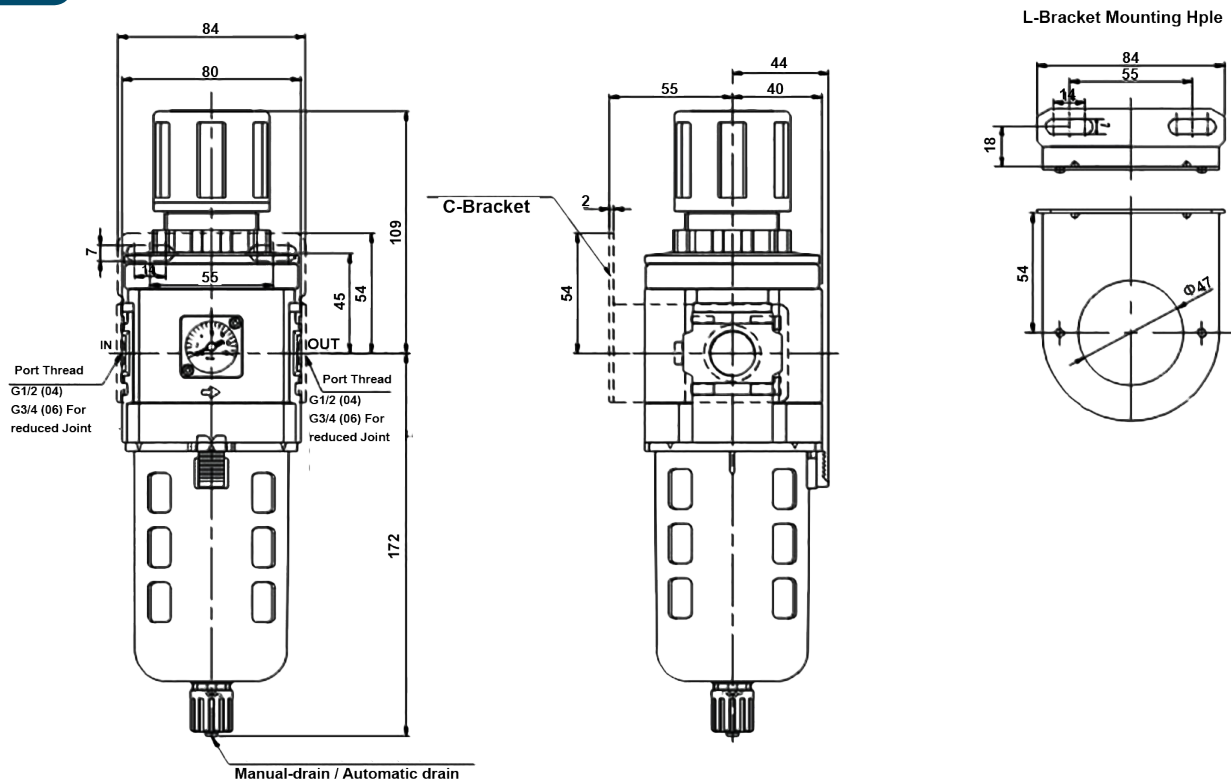
Note: Manual drain can insert ID Ø4 PU tube at drain outlet.

## SFR2



Note: Manual drain or automatic drain can insert ID  $\phi$  5.5 PU tube at drain outlet.

## SFR3



Note: Manual drain or automatic drain can insert ID  $\phi$  5.5 PU tube at drain outlet.